

Studio Problématique

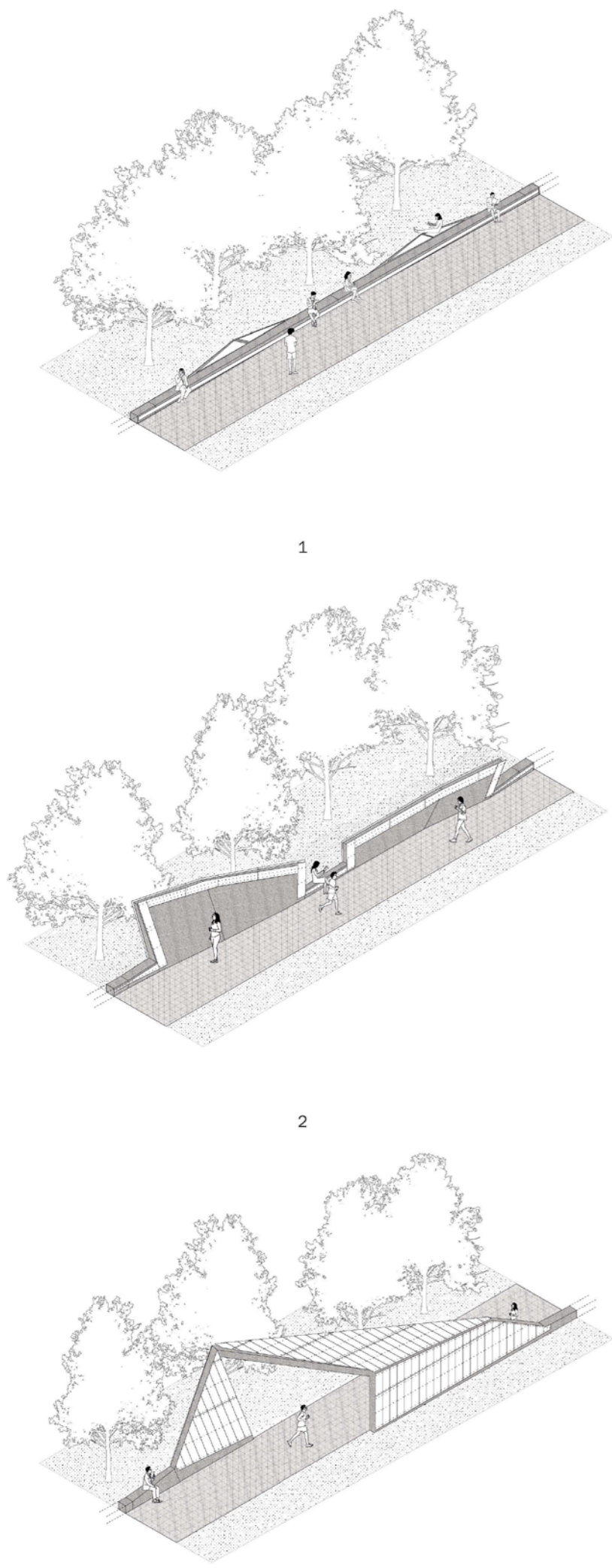
Abandoned Landscape
 abandoned landscape :
 Recognition of space that was once engaged by the cultural domain or has the potential to be.

Artline

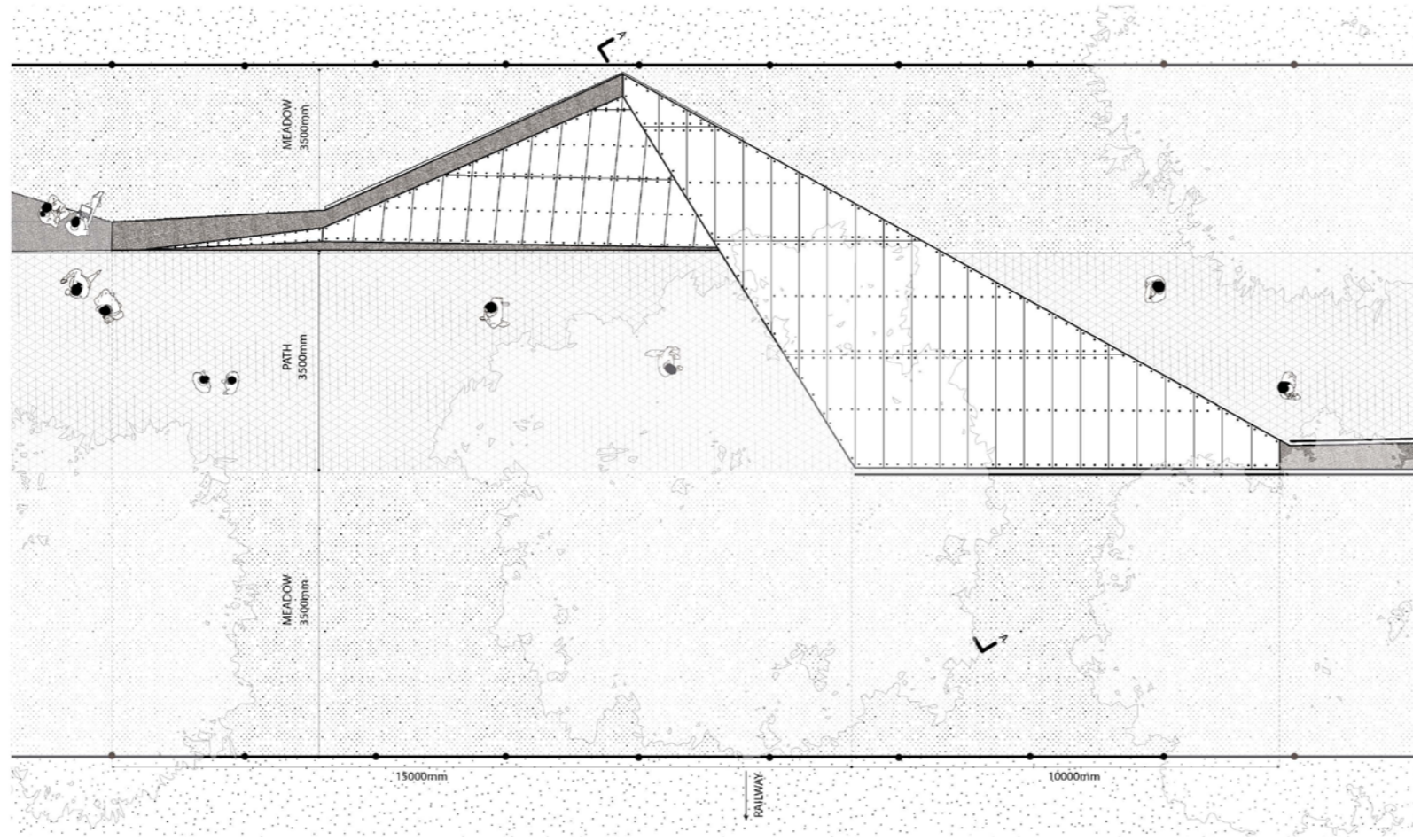
Toronto Railpath Extension, is at the heart of surrounding art galleries and studios stretching from the Junction Triangle to Parkdale, Toronto's growing art scene. An area where artists face financial constraints by the rising cost of living, Artline is comprised of a flexible open-air gallery, affordable artist residences, and multi-functional art and performance centre. That aims to provide spaces for artists to live and practice and showcase their work to the public through dynamic and accessible ways. The colour orange runs the stretch of the site, seen mainly on the painted steel panels that cover the concrete gallery zig-zagging the linear lengths of the site. As well as found on the bridges, architectures, the amphitheatre and changing fall colours of the planted trees. All to unify the design and to add to its identity.

The park strives to engage individual artists, art communities, organizations, enthusiasts, local residence and commuters through the ranging programming found across the park. The open-air gallery is an angular framework that allows for art to be mounted, hung, projected and painted on, and experienced along the path and seen from passing on the train. Its flexible bench, wall, and breezeway conditions open up the possibilities of how it is engaged. The artist residences and central square provide an affordable and attractive space for a local art community to establish and thrive. At the atypical portion of the park, the art centre, with large bi-fold doors opening to the outdoors and vegetated amphitheatre, provides versatile spaces for art display, performance and education as well as for general enjoyment.

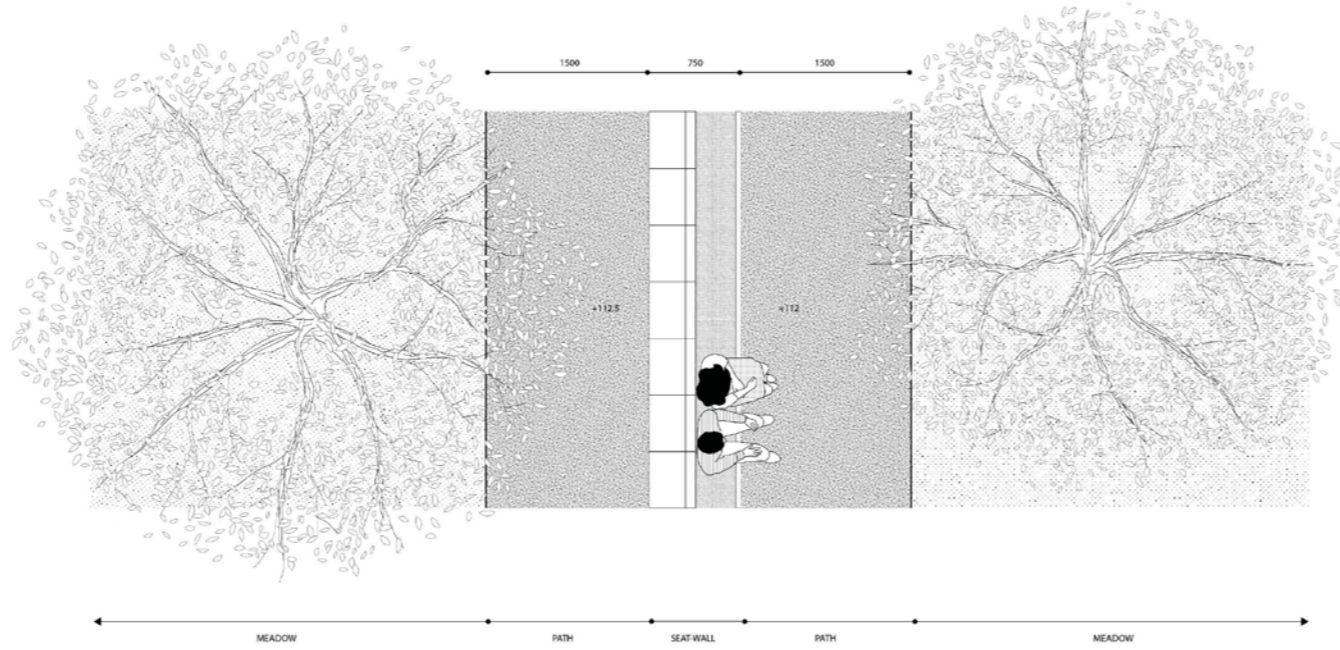
The Artline intends to be at the interface of art and design, blending creative disciplines into a new typology of an urban landscape. As well, a repeatable park model that can be implemented along two other monofunctional rails-to-trails in Toronto: the Bellline and Don Mills Trail. They, too, can become a framework and destination for the arts.



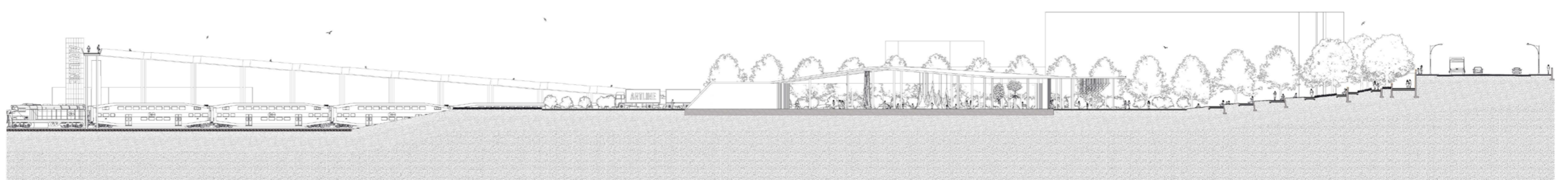
1 | Open-Air Gallery - Bench Condition 2 | Open-Air Gallery - Wall Condition 3 | Open-Air Gallery - Breezeway Condition



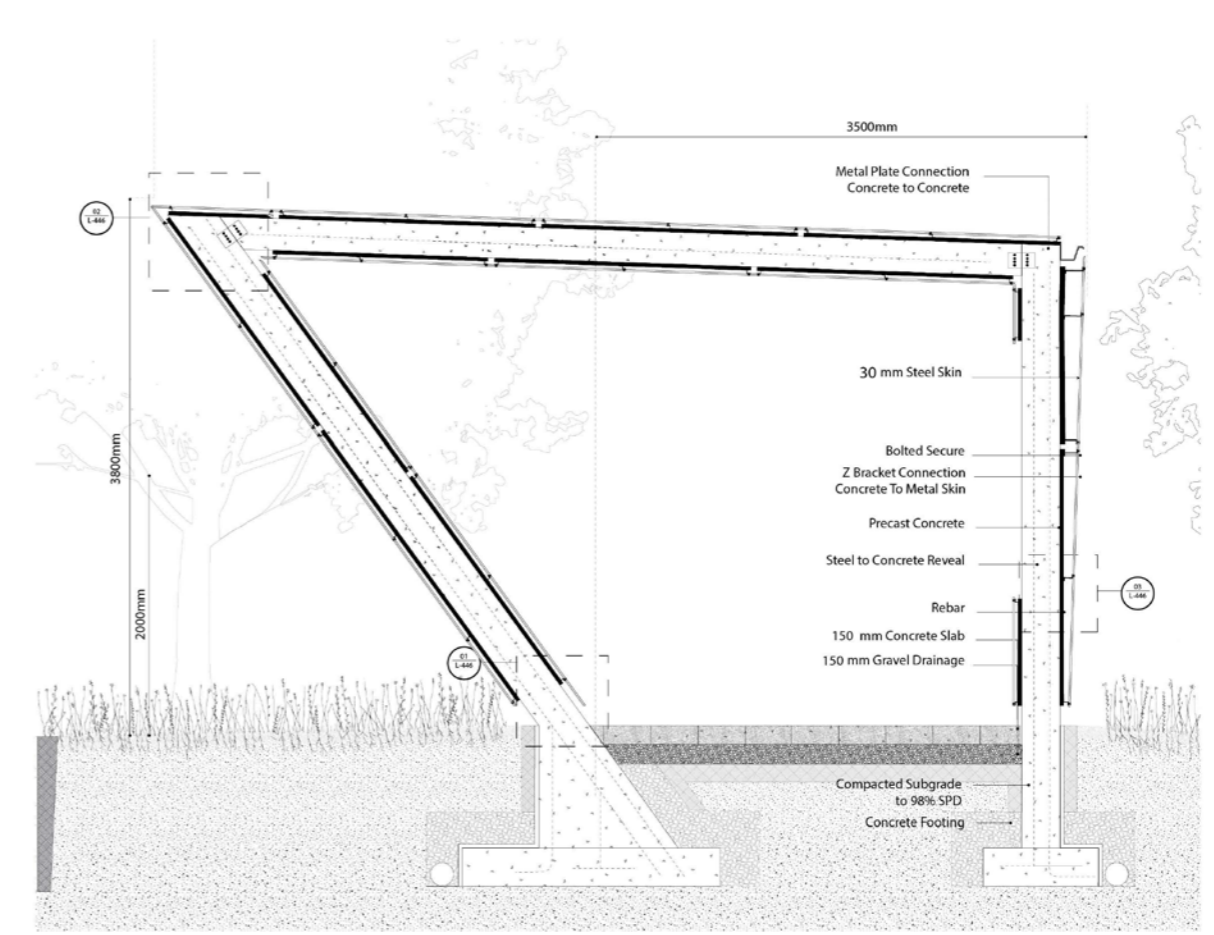
4



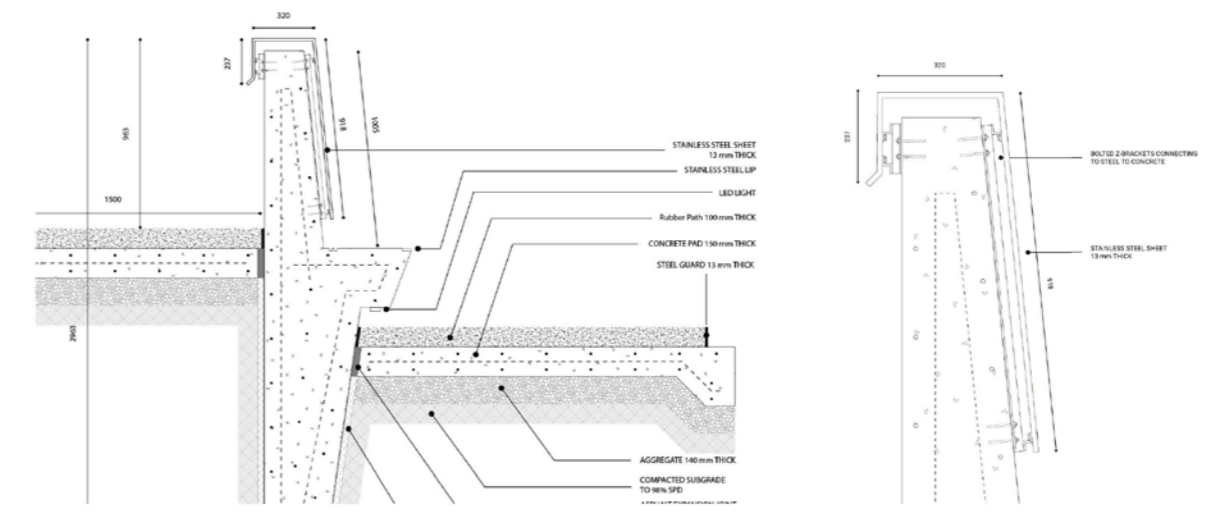
5



6

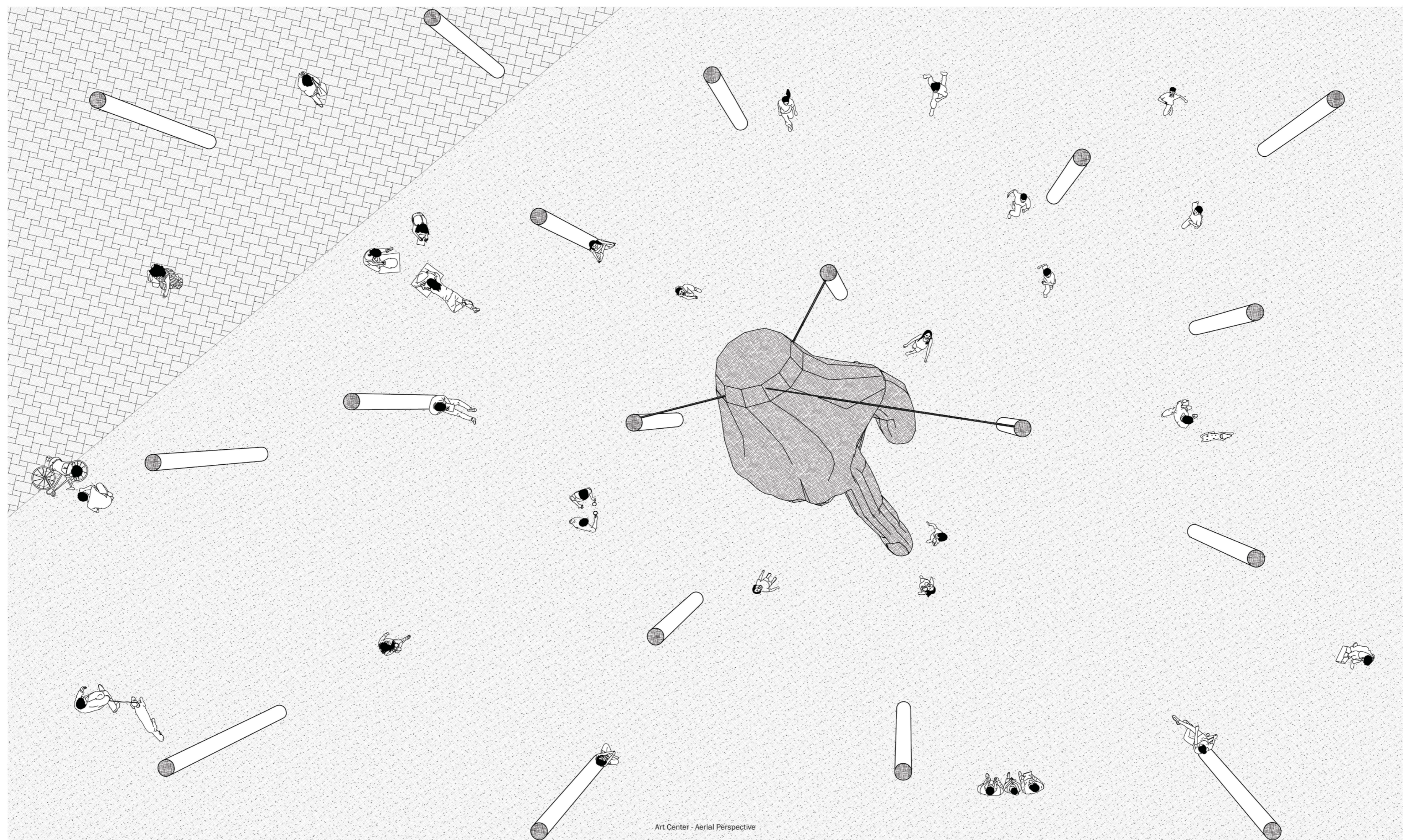


7



8

4 | Breezeway Detail - Plan 5 | Breezeway Detail - Section Atypical Site - Section 6 | Seat-Wall Detail - Plan 7 | Right | Seat-Wall Detail - Section | Left | Seat-Wall Detail - Double Z-Bracket Metal Connection "the skin"



Art Center - Aerial Perspective